



# marathon™

— ELECTRIC MOTORS

## IEC IE3 Motor Range

© 2014 Marathon

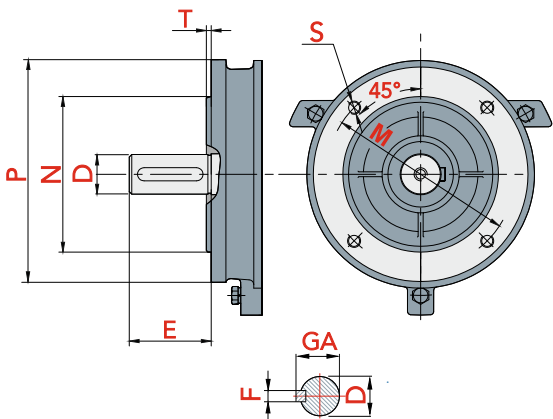


REGAL

# BASIC DIMENSIONS

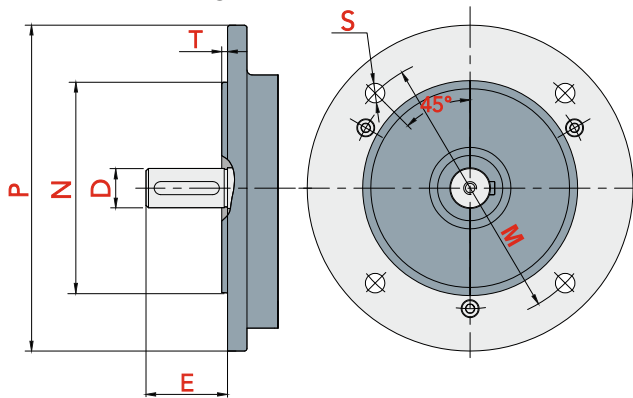
## B14A - flange ("C" face)

The flange is smaller than the motor frame.  
The holes are tapped.  
Available for frame sizes 63 to 160 mm.

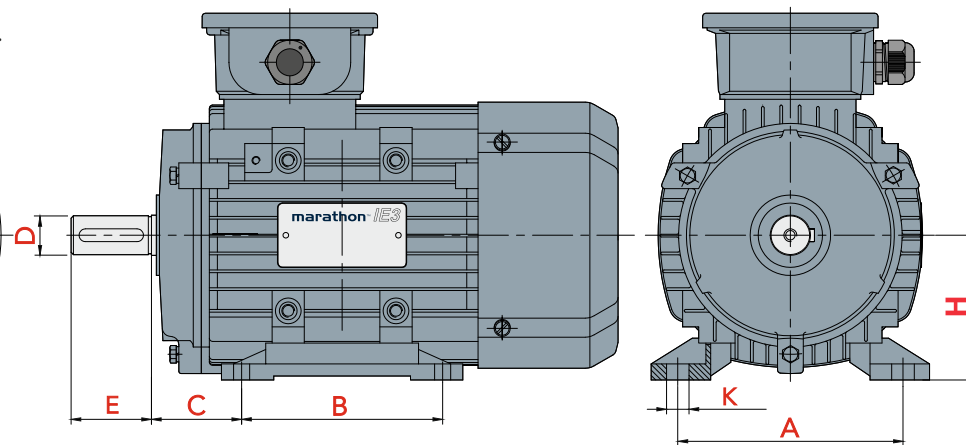


## B5 - flange ("D" flange)

The flange is bigger than the motor frame.  
The holes are not tapped.  
B5 flanges are available for all motor sizes.



## B3 - foot mounted motor



## B14B - flange

The flange is bigger than B14A but smaller than B5 flange.  
The holes are tapped. Available for frame sizes 63 to 160 mm.

SIZE	Shaft		B5 FLANGE ("D" flange)				B14A FLANGE ("C" face)				B14B FLANGE			
	Diameter D	Length E	PCD M	Spigot N	Diameter P	Hole Dia S	PCD M	Spigot N	Diameter P	Hole S	PCD M	Spigot N	Diameter P	Hole S
63 frame	11	23	115	95	140	10	75	60	90	M5	100	80	120	M6
71 frame	14	30	130	110	160	10	85	70	105	M6	115	95	140	M8
80 frame	19	40	165	130	200	12	100	80	120	M6	130	110	160	M8
90 frame	24	50	165	130	200	12	115	95	140	M8	130	110	160	M8
100 frame	28	60	215	180	250	14.5	130	110	160	M8	165	130	200	M10
112 frame	28	60	215	180	250	14.5	130	110	160	M8	165	130	200	M10
132 frame	38	80	265	230	300	14.5	165	130	200	M10	215	180	215	M12
160 frame	42	110	300	250	350	18.5	215	180	250	M12	265	230	300	M12



To download DataSheets and Drawings please go to:  
<http://www.regalbeloit.eu/MLA3/documents.html>



Frame	Standard Ball Bearing Sizes	
	DE	NDE
80	6204 ZZ C3	6204 ZZ C3
90	6205 ZZ C3	6205 ZZ C3
100	6206 ZZ C3	6206 ZZ C3
112	6306 ZZ C3	6306 ZZ C3
132	6308 ZZ C3	6308 ZZ C3
160	6309 ZZ C3	6309 ZZ C3

# TECHNICAL DATA

Material	TYPE	Output	Output	Frame Size	Speed	Speed	Rated current 50Hz			60Hz	Power	Efficiency at 50Hz			Rated	Ratio			Weight	
		50Hz	60Hz		50Hz	60Hz	380V	400V	415V	460V	Factor	Class	100% Load	75% Load	50% Load	torque	Starting	Starting		B/down
		kW	kW		rpm	rpm	A	A	A	A	cosφ		%	%	%	Nm	current	torque		torque
<b>2pole, 3000/3600rpm, IP55, insulation class F/B</b>																				
	MLA3 80A-2	0.75	0.86	80M	2880	3456	1.7	1.61	1.56	1.61	0.83	IE3	80.7	80.7	79.1	2.49	6.8	2.3	2.3	11
	MLA3 80B-2	1.1	1.27	80M	2880	3456	2.43	2.31	2.22	2.32	0.83	IE3	82.7	82.7	81.0	3.65	7.3	2.3	2.3	11.6
	MLA3 90S-2	1.5	1.73	90S	2895	3474	3.25	3.1	2.98	3.11	0.83	IE3	84.2	84.2	82.5	4.95	7.6	2.3	2.3	16
	MLA3 90L-2	2.2	2.53	90L	2895	3474	4.57	4.34	4.19	4.35	0.85	IE3	85.9	85.9	84.2	7.26	7.8	2.3	2.3	20.6
	MLA3 100L-2	3	3.45	100L	2895	3474	5.94	5.64	5.44	5.66	0.88	IE3	87.1	87.1	85.4	9.9	8.1	2.3	2.3	23.7
	MLA3 112M-2	4	4.6	112M	2905	3486	7.83	7.44	7.17	7.46	0.88	IE3	88.1	88.1	86.3	13.1	8.3	2.3	2.3	28.7
	MLA3 132SA-2	5.5	6.3	132S	2930	3516	10.6	10.1	9.75	10.1	0.88	IE3	89.2	89.2	87.4	17.9	8	2.2	2.3	42.5
	MLA3 132SB-2	7.5	8.6	132S	2930	3516	14.4	13.7	13.2	13.6	0.88	IE3	90.1	90.1	88.3	24.4	7.8	2.2	2.3	50.2
	MLA3 160MA-2	11	12.7	160M	2945	3534	20.4	19.3	18.6	19.4	0.90	IE3	91.2	91.2	89.4	35.7	7.9	2.2	2.3	71.8
	MLA3 160MB-2	15	17.3	160M	2945	3534	27.2	25.9	24.9	26.0	0.91	IE3	91.9	91.9	90.1	48.6	8	2.2	2.3	91.7
	MLA3 160L-2	18.5	21.3	160L	2940	3528	34.2	32.4	31.3	32.5	0.89	IE3	92.4	92.4	90.6	60.1	8.1	2.2	2.3	101
<b>4pole, 1500/1800rpm, IP55, insulation class F/B</b>																				
	MLA3 80B-4	0.75	0.86	80M	1420	1704	1.86	1.77	1.71	1.77	0.74	IE3	82.5	82.5	80.9	5.04	6.5	2.3	2.3	12.9
	MLA3 90S-4	1.1	1.27	90S	1445	1734	2.68	2.55	2.46	2.56	0.74	IE3	84.1	84.1	82.4	7.27	6.6	2.3	2.3	16.8
	MLA3 90L-4	1.5	1.73	90L	1445	1734	3.61	3.43	3.31	3.44	0.74	IE3	85.3	85.3	83.6	9.9	6.9	2.3	2.3	19.7
	MLA3 100LA-4	2.2	2.53	100L	1435	1722	4.93	4.68	4.52	4.70	0.78	IE3	86.7	86.7	85.0	14.6	7.5	2.3	2.3	25.5
	MLA3 100LB-4	3	3.45	100L	1435	1722	6.66	6.32	6.09	6.34	0.78	IE3	87.7	87.7	86.0	20.0	7.6	2.3	2.3	31.3
	MLA3 112M-4	4	4.6	112M	1440	1728	8.56	8.14	7.84	8.16	0.80	IE3	88.6	88.6	86.8	26.5	7.7	2.3	2.3	39.2
	MLA3 132S-4	5.5	6.3	132S	1460	1752	11.6	11.1	10.7	11.0	0.80	IE3	89.6	89.6	87.8	36.0	7.5	2	2.3	51.2
	MLA3 132M-4	7.5	8.6	132M	1460	1752	15.3	14.6	14	14.6	0.82	IE3	90.4	90.4	88.6	49.1	7.4	2	2.3	58.2
	MLA3 160M-4	11	12.7	160M	1465	1758	22.3	21.2	20.4	21.3	0.82	IE3	91.4	91.4	89.6	71.7	7.5	2.2	2.3	88.2
	MLA3 160L-4	15	17.3	160L	1465	1758	30.1	28.6	27.6	28.8	0.82	IE3	92.1	92.1	90.3	97.8	7.5	2.2	2.3	102
<b>6pole, 1000/1200rpm, IP55, insulation class F/B</b>																				
	MLA3 90S-6	0.75	0.86	90S	935	1122	2.36	2.24	2.16	2.25	0.61	IE3	78.9	78.9	77.3	7.66	5.8	2.1	2.1	17.2
	MLA3 90L-6	1.1	1.27	90L	945	1134	2.99	2.84	2.73	2.86	0.69	IE3	81.0	81.0	79.4	11.1	5.9	2.1	2.1	22.4
	MLA3 100L-6	1.5	1.73	100L	949	1139	4	3.8	3.66	3.82	0.69	IE3	82.5	82.5	80.9	15.1	6	2.1	2.1	23.5
	MLA3 112M-6	2.2	2.53	112M	955	1146	5.58	5.31	5.11	5.31	0.71	IE3	84.3	84.3	82.6	22.0	6	2.1	2.1	31.8
	MLA3 132S-6	3	3.45	132S	968	1162	7.48	7.11	6.85	7.13	0.71	IE3	85.6	85.6	83.9	29.6	6.2	2	2.1	39.9
	MLA3 132MA-6	4	4.6	132M	968	1162	9.85	9.36	9.02	9.38	0.71	IE3	86.8	86.8	85.1	39.5	6.8	2	2.1	40.7
	MLA3 132MB-6	5.5	6.3	132M	968	1162	12.6	12	11.6	12.0	0.75	IE3	88.0	88.0	86.2	54.3	7.1	2	2.1	61.8
	MLA3 160M-6	7.5	8.6	160M	970	1164	16.6	15.7	15.2	15.8	0.77	IE3	89.1	89.1	87.3	73.8	6.7	2.1	2.1	80.6
	MLA3 160L-6	11	12.7	160L	970	1164	23.4	22.2	21.4	22.4	0.79	IE3	90.3	90.3	88.5	108.3	6.9	2.1	2.1	98.9

ALUMINIUM FRAME

**marathon**™



Regal Beloit BV  
P.O. Box 51  
Mors 2  
NL-7150 AB Eibergen  
The Netherlands

Tel +31-(0)545 464600  
[www.regalbeloit.eu](http://www.regalbeloit.eu)

A Regal Brand

**REGAL**

[www.regalbeloit.com](http://www.regalbeloit.com)